

YOUR PATHWAY

Helping you choose
the best route for
your education
and career

23/24



**YOUR >>>
PATHWAY**



**COLLEGE,
SCHOOL
OR TRAINING
PROGRAMME**

So where are you in your education journey?

Schools start teaching GCSEs in **Year 9 or 10**, depending on when you pick your options. In **Year 10**, you'll get an opportunity to experience the world of work and start to find out what type of career you might be interested in. In **Year 11**, you will of course have your exams, but you will also have to decide what you want to do next after your GCSEs.

Under Government guidelines, you must now stay in education or training until the age of 18. This means that you have three options to choose from when you finish Year 11, as you enter a stage known as post-16 education or Key Stage 5:

1 Stay at school (if they have a sixth form) or go to the sixth form at a different school

2 Go to college to study a full-time academic or vocational programme

3 Start a training programme in the form of an apprenticeship or traineeship

Mental Health & Wellbeing

The last few years have been an unsettling time for everyone. We all hope that the worst of the Coronavirus pandemic is behind us but there are always other concerns, within our own lives or on a national or global scale, that can affect our mood. You might find that you're feeling sad or worrying more than usual. These feelings are completely normal and there are things you can do to help:

- » Talk to someone you can trust – this could be a parent, family member, friend, teacher, youth worker – you are not alone and just talking to someone can really help.
- » Take care of yourself – spend time doing things you enjoy, get outside and move, try to get enough sleep (put your phone away!)
- » Get more help – if you feel you need more support, get in touch with your GP or contact:

Kooth – online mental health support, information and counselling – www.kooth.com

Off the Record – listening support and a range of other services – www.offtherecord-banes.co.uk

If you feel you are at crisis point you can contact **Childline on 0800 1111** or **Samaritans on 116 123 – 24 hours a day**



Making choices about the future and preparing for exams can also be a stressful time for some people; the different options can sometimes feel overwhelming.

This booklet is to help guide you to where you want to be. There is information in here about your next steps and, if you are unsure, it will help you find out who to get in touch with to figure it all out. There are options for you whatever your situation, so keep reading!

If you are unsure of your plans and not made any applications yet, talk to your school or college careers adviser and go to some open days to see what is on offer. If you're still not sure contact us at Youth Connect South West (www.youthconnectsouthwest.org.uk) and we'll do our best to help.



YOUR PATHWAY

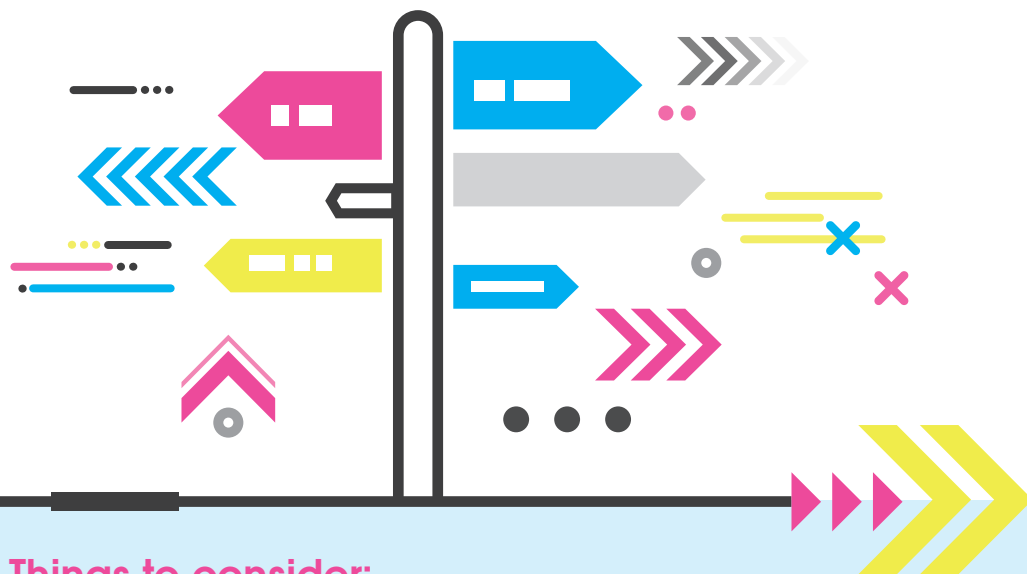
GCSEs

GCSEs are your first opportunity to pick some of the subjects you will carry on studying. You will get the opportunity to choose some of the subjects you really enjoy... as well as drop some subjects you might not!

All students **will study** **Mathematics**, both **English** subjects and **Science**.



Each school has its own process for what is known as 'options', which is the procedure for you choosing your GCSE subjects. This will happen in either Year 8 or 9.



Things to consider:

- + If you know what career you want to pursue, then do some research and find out if there are any specific GCSE subjects you must study.
- + Not sure what to study after 16 or what job you want? Keep your options open and try and get a balance of subjects.



Special Educational Needs and Disability Information, Advice and Support

Sendias Bathnes offers a service for children and young people aged 0-25 with special educational needs and/or disability (SEND) or emerging SEND, and their parents and carers, who live in Bath and North East Somerset.

We provide children and young people, and their parents and carers, with free, confidential, impartial information, advice and support so that they can make informed choices and fully participate in the decision-making process affecting their education, health and care.

Children, young people and parents and carers can contact us as soon as they have a concern about their child's development or education. A child or young person does not need to have an education, health and care plan (EHCP) in order to get our help.

We help to prepare families for all sorts of SEND related meetings: helping to prepare questions to ask schools, colleges or the local authority; managing expectations by referring back to the law and guidance and, where necessary, attending meetings with families. We also provide information and advice regarding exclusion from school.

Have a look at our factsheets and videos

We have lots of factsheets for children and young people and parents and carers on our website www.sendiasbathnes.org.uk. We also have a busy Facebook account, please follow us at www.facebook.com/SendiasBathnes


OUR CONTACT DETAILS:

Call us on the Advice Line:  01225 394 382

(An answer phone operates at busy times and outside of office hours)

Email us:  sendias@bathnes.gov.uk

Text or

WhatsApp us:  07530 263401 Website:  www.sendiasbathnes.org.uk





**SPECIAL EDUCATIONAL
NEEDS AND DISABILITIES**



B&NES is fortunate to have a number of programmes available for SEND students to access, whether that be in special schools, **such as Three Ways or Fosse Way or at Bath College.**

IF YOU HAVE AN EHCP YOU WILL HAVE A SEND PRACTITIONER WHO WILL ADVISE YOU ON YOUR PATHWAY.

DFN PROJECT SEARCH

Project SEARCH is a one-year supported internship programme for students in their final year of education. The access to work programme enables interns to spend a year on site with an employer whilst gaining the skills, experience, knowledge, and confidence to find paid employment at the end of the year. Please contact jjeffery@fossewayschool.com for more information.

LEARNING 4 WORK

Introducing a unique programme exclusively tailored for young individuals unable to enrol on conventional college programmes, and often feeling let down by the educational system's inability to cater to their specific requirements.

✉ contact@ycsw.org.uk ☎ **01225 396980**

PARTNERSHIP 4 LEARNING

A tailored programme designed for young people seeking an adaptable and nurturing educational experience, particularly those facing social isolation or grappling with elevated anxiety and mental health challenges. ✉ contact@ycsw.org.uk ☎ **01225 396980**

WE WORK FOR EVERYONE (SUPPORT INTO PAID WORK)

If you have finished your education and are looking for work, an Employment Navigator could help. Support is available for anyone with a learning difficulty, a learning disability or autism.

For more information see the website: Weworkforeveryone.org

Would you be interested in working but might need some support and guidance?

INCLUSIVE INTERNSHIPS IN B&NES

This new programme has launched at Bath & North East Somerset Council - you would have additional support to do a work placement, to practice the skills needed for work and to learn about the working life. We will work with local employers to offer a yearlong programme and you will be supported by a job coach if needed.

For more information or to get started email our SEND Employment Officer Lucy Beattie - lucy_beattie@bathnes.gov.uk or call **01225 395030.**



Special educational needs and disabilities (SEND) can affect a young person's ability to learn. They can affect their:

- ✗ Behaviour or ability to socialise, **e.g.** they struggle to make friends
- ✗ Reading and writing, **e.g.** because they may have dyslexia
- ✗ Concentration levels, **e.g.** because they may have ADHD
- ✗ Ability to understand things
- ✗ Physical ability



Bath College offers the following programmes within its Foundation Learning department:

▶▶▶ **PATHWAYS FOR ADULTHOOD PROGRAMME**

“Pathways for Adulthood” aims to support young people into adulthood with employment, good health, independent living skills, relationships and community inclusion. The PfA curriculum extends beyond the academic, technical or vocational learning and provides learners with broader development, enabling them to develop and discover their interests and talents.

▶▶▶ **LIFE AND LIVING SKILLS (LILS)**

“The life and independent living skills course” is designed to build upon the learner’s sense of self and equip them with the skills to gain greater independence and become an active member of their community. By developing crucial life skills, participants will gain knowledge and experience to enhance personal growth and well-being across many areas including, domestic, financial, travel, participation, and work-based learning to support their progression into adulthood and further learning opportunities.

▶▶▶ **STEP UP**

The Step-Up Course” is a comprehensive programme, designed to help young people develop essential knowledge, skills and behaviour that will empower each individual to pursue a career in their chosen vocational area through emotional, social and educational support and development to enhance their personal growth. The Step-Up Course has been designed as a ‘transition’ course, to allow young people who may have been out of education for a while, or disengaged in education to re-engage, and allow them to flourish to their fullest potential.

▶▶▶ **TRAINEESHIPS**

The ‘Traineeship’ course is a structured training programme that provides individuals with the knowledge, skills and behaviours to gain practical work experience and develop specific skills in a particular industry or profession, providing the learners, the skills and experience needed to support their chosen career pathway.



☎ 01225 312 191 🌐 www.bathcollege.ac.uk ✉ info@bathcollege.ac.uk



POST-16 EDUCATION

Students no longer study a single qualification at post-16, instead you will undertake a programme of study. A study programme is designed to meet your individual needs and provides you with the knowledge and skills required for employment or further study.

Each study programme is made up of the following:

- + Academic, vocational or technical qualification
- + Work experience and/or employability skills
- + Personal and social development
- + English and/or maths development (if required, see page 11)

“ My study programme provides me with all the different things I need to make sure I achieve my career goal of being a Sport Physiotherapist. I have benefited from the work experience placement and the skills development, both of which have enabled me to write a decent personal statement for my UCAS application. I feel more confident now about progressing to the next stage of my education.

- James, Sport Science

”

ENGLISH AND MATHS AT POST-16

It is extremely important that young people have a strong understanding of both English and maths. Employers and universities look at these as fundamental skills required to operate effectively in the 21st century.

Therefore, if you have not achieved a grade 4 in English and/or maths, you will continue to study these when you enter post-16 education. If this applies to you, this will form part of your timetable, where you will either be entered to re-sit your GCSE in that subject or study Functional Skills, until you are ready to re-sit your GCSE in that subject.

You need only pass one English subject at grade 4 or above to be exempt from studying English post-16. However, some careers and degree programmes look for a GCSE at grade 4 in English Language as a prerequisite e.g. the Childcare and Early Years sector.

At Bath College*, the following applies in regards to English and maths:

- + If you have a grade 3, you will work towards retaking your GCSE, studying 3 hours per week for each subject.
- + If your grade in either subject is lower than a 3, you will sit a key skills assessment to determine which level of Functional Skills you will study. Following successful progress through the Functional Skills levels (1.5 hours per week for each subject), you will be entered to re-sit your GCSE.

*Other colleges and schools might have a different approach to English and maths at post-16



YOUR GCSES

You have 5 or more GCSEs at Grade 9-4

You have fewer than 5 GCSEs, at Grade 9-4 and if you are missing Maths and/or English at Grade 4

A Levels
Page 15

Technical Certificates, NVQs or VRQs
Page 14

Level 1 BTEC
Page 13

Level 3 BTEC
Page 13

Level 2 BTEC
Page 13

T Level Foundation Programme
Page 14

T Levels
Page 14

Traineeship
Page 17

After completing a Traineeship, most people will go on to do a Level 2 Apprenticeship, but you could go into employment if you're 18+.

Level 3 Advanced Apprenticeship
Page 16

Level 2 Intermediate Apprenticeship
Page 16

Whilst you can go into employment after a Level 2 qualification, many employers will expect you to do a Level 3 course first.

WHAT'S NEXT?

Gap Year
Page 25

University
Page 24

Higher/Degree Apprenticeship
Page 22

School Leavers Programme
Page 23

Employment /Volunteering
Page 28

SO, WHAT EXACTLY CAN I STUDY AT POST-16?

BTEC

A BTEC is a qualification that brings together practical and academic skills at Level 2 and 3 taking a hands-on approach to learning, without missing any of the important theory on the subject. **BTECs are assessed through practical, controlled assessment, written work and exams.**

BTECs are designed for young people interested in a particular sector or industry. They are designed in partnership with industry representatives, so **all employer and student needs are met**. BTECs are co-designed to develop industry related skills

They are highly valued by a large number of companies, as they like the fact that students have mandatory work experience and there is a **strong focus on employability skills and attitudes**. One BTEC will usually count as a full-time programme e.g. BTEC Extended Diploma in Computing

BTECs are delivered at Level 1, 2 and 3 with level 3 carrying UCAS points, which can be equivalent to three A Levels, and therefore can be used to gain entry onto a degree programme at university.

BTECs are graded by Pass, Merit, Distinction and Distinction*. Some Colleges will require certain grades in order to progress through the levels. E.g. At Bath College you will require a Merit grade on a level 2, including Maths and English at grade 4, to progress on to a level 3 BTEC.

NVQs are competence-based qualifications and provide you with the specific skills to do a particular job. They focus on the skills you will need in the workplace and assessment is usually by practical tasks and assignments. They are usually studied alongside a work placement and can be taken as a stand-alone qualification, or as part of an apprenticeship.

At Bath College lots of students study NVQs as part of their study programme. One particular course area where students work towards NVQs is Hair and Beauty. This is because a large part of their programme is working in the public salons, which complements their classroom-based learning.



T LEVELS

T-Levels are a technical-based qualification that has 80% of classroom based learning, focusing upon skills that employers need. The other 20% is focused upon industry placement whereby T-Level students have the opportunity to put the skills into action. Industry placement varies from each T-Level, but all students will complete a minimum of 45 days as well as an Employer Set Project. As a wave two provider, Bath College are already delivering:

- 
-
- 
- Health (Occupational Specialism: Adult Nursing)
 - Digital Production, Design & Development
 - Education & Childcare
 - Health (Occupational Specialism: Supporting the Care of Children and Young People)
 - Digital Support
 - Engineering (Occupational Specialism: Mechanical Engineering Electrical and Electronic Engineering)
 - Science
 - Management and Administration

Find out more here:

www.bathcollege.ac.uk/t-levels

A LEVELS

A Levels are academic qualifications offered by colleges and school sixth forms for students aged 16-19. A Levels provide you with an opportunity to study **more than one subject**.

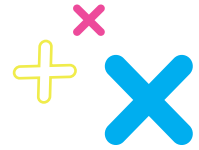
All students will be expected to study for a minimum of 3 A levels but you can also combine this with a BTEC qualifications in some schools and colleges.

▶▶ **DID YOU KNOW?** In B&NES you can study A Levels at 19 school sixth forms. ❓

If you want to take an A Level route, then make sure you know that:

- + A-Levels are academic and there is a big step-up from GCSEs.
- + The entry requirements for A Level programmes depend on the sixth form or college you are applying to (but will include at least 5 GCSEs at 4 and above including maths and English) so be sure to check individual provider websites.
- + If you want to pursue a very academic career, such as a Doctor, you will need to take A Levels at post-16 level.
- + Consider taking the Extended Project Qualification if your college or school sixth form offers this. This is a project-based qualification only available to A Level students, which is particularly beneficial for students who wish to apply to university, as it carries additional UCAS points.





APPRENTICESHIPS

An apprenticeship is a real job with real pay, combining all the benefits of a regular position with worthwhile training. They often suit students who have a clear idea of their career path and who no longer want to study full-time in a classroom environment.

Today, not all apprentices have to attend a college or training provider at all, as an assessor can visit them in the workplace.

Apprenticeships are taught at various levels, each of which usually takes 12-18 months to complete but can last over 4 years. Depending on your grades, experience and chosen career / apprenticeship, at 16 years old you could start a level 2 or level 3 Apprenticeship.


Information about apprenticeships standards can be found on [Apprenticeship search / Institute for Apprenticeships and Technical Education](#) and current apprenticeship vacancies for the whole country are listed on - www.gov.uk/apply-apprenticeship, so sign-up and have a look at the opportunities available. Also bear in mind that certain companies run their own apprenticeship programmes, so make sure you visit their website for more information.

Key benefits:

- » An opportunity to learn job-specific skills
- » On-the-job training
- » Paid holidays
- » Qualifications
- » Salary



**DID YOU
KNOW?**



82% of apprentice learners in 19-20 were “likely” or “extremely likely” to recommend Bath College to friends or family

TRAINEESHIPS

The 'Traineeship' course is a structured training program that provides individuals with the knowledge, skills and behaviors to gain practical work experience and develop specific skills in a particular industry or profession, providing the learners, the skills and experience needed to support their chosen career pathway.

Traineeship is delivered at our city centre campus. The course can last up to a year, depending on the industry that the young person is interested in, and the job opportunities available;

Maths and English: Support to help give you the literacy and numeracy skills needed for the workplace.

Training and Learning: During a traineeship, participants receive a combination of on-the-job training and classroom-based learning. They gain hands-on experience by working alongside experienced employees and learn essential skills and knowledge through structured training sessions.

Industry Focus: Traineeships are available in various industries, such as healthcare, information technology, finance, hospitality, construction, and many others. The focus of the traineeship is determined by the employer's needs and the trainee's interests.

Career Progression: Upon completing a traineeship, participants may have the opportunity to secure permanent employment with the company where they completed the program. Alternatively, the skills and qualifications gained can enhance their employability in the broader job market.

Progression opportunities following Traineeships:

- Apprenticeship
- Employment
- Volunteering





**YOUR
PATHWAY** >>>



**RE-
ENGAGEMENT**

There are a number of programmes in B&NES and the surrounding areas that help young people get back into education. These programmes offer a very supportive environment and can be tailored to suit the needs of the people who participate on the programmes.

These programmes are all different, but will usually offer those who enrol the possibility of working towards a qualification, develop employability skills, as well as providing personal development opportunities and the chance to experience a variety of vocational areas.

Bath Rugby Foundation

Phase is delivered in partnership with Bath College and Bath Rugby Foundation. Our primary focus is to empower young people to acquire the fundamental knowledge, skills, and attitudes needed for a successful transition into adulthood. This program goes beyond traditional academic support, offering comprehensive assistance in emotional, social, and educational aspects to nurture personal growth in each participant. At its core, the course has been meticulously crafted as a transformative journey, tailored specifically to reignite the passion and engagement of those who may have experienced disconnection from education. Our ultimate aim is to enable these individuals, providing them with the essential tools and resources to unlock their true potential and thrive in their chosen paths.

The Prince's Trust TEAM course is a 12 week long personal development course that is challenging, supportive and fun! You'll get the chance to meet new people, learn new skills and gain plenty of practical experience. The staff will also help you think about what you want to do next. Start dates throughout the year.



Prince's Trust

OUR VISION:
Inspiring Youth
Services that young
people want to be
a part of.



Service delivered
on behalf of

**Bath & North East
Somerset Council**

Youth Connect South West is a local charity that supports young people in B&NES. We provide a range of service for young people which include targeted support, positive activities, youth work, alternative education and support to engage in education, employment or training. Youth Connect workers can meet you where you feel comfortable, in school, at home or in a community building.

You can also drop in and see us at Bath City Centre, 28 Southgate Street (opposite the bus station). We are there Wednesday, Thursday and Friday between 1-4pm where you will find friendly Youth Connect staff waiting to offer help, support and advice. **For more information:**

 www.youthconnectsouthwest.org.uk

 @youthconnectsouthwest

 01225 396980

 /Youth Connect South West

 Contact@ycsw.org.uk



STILL NOT SURE WHAT TO DO?

Making a decision on your future at the age of 15/16 is daunting, so it is essential you don't make it alone and go and seek as much information, advice and guidance as possible. There are a number of people and organisations who can help you with this.

What you can do:

- » Talk to a range of people; your parents, teachers, school careers adviser. This will help you get a variety of advice.
- » Think about your preferred learning style; do you prefer theory over practical? classroom over work-based?
- » Research all of your options, some helpful websites to visit are Careerpilot and National Careers Service.
- » Colleges and school sixth forms will visit your school to speak about the options at post-16 at their institutions.
- » Attend open evenings/days to get a feel for sixth forms, colleges and universities. Check websites for information.



Want a bit of extra help?

Bath College's Careers and Employability Team has both expertise and great careers resources, so pop into one of the College's Open Events to speak to a member of the Careers and Employability Team.

Dates can be found at www.bathcollege.ac.uk/openevents

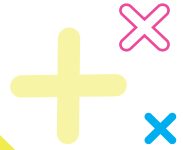
WHAT'S NEXT ?

Today there are a number of options available to you when you finish post-16 education.

Gone are the days when it was either go to university or go into a job.



**OVER THE NEXT FEW PAGES
WE'LL EXPLORE WHAT YOU
CAN LOOK FORWARD TO.**



HIGHER APPRENTICESHIPS

When you leave post-16 education you will be able to progress on to an apprenticeship from level 2, but if you completed a level 3 qualification whilst at college or school you can access higher and degree apprenticeships. Higher Apprenticeships are available in a wide range of subjects and range from Level 4 to 7. If you study a higher apprenticeship standard you could complete one of these qualifications, although not all higher apprenticeship standards have embedded qualifications:

- » Higher National Diploma (HND) / Higher Technical Qualification (HTQ)
equivalent to the second year of a three-year university degree
- » Foundation degree
- » Bachelor's degree
- » Master's degree

Degree apprenticeships are a new qualification and bring together the very best of higher and vocational education. They allow apprentices to achieve a full bachelor's or master's degree, whilst training on the job with the aim of filling higher level skill gaps within an organisation. When you complete your degree apprenticeship you would have obtained a degree, several years of practical experience, workplace skills and often practical, work-based qualifications like NVQs as well.

Something to consider

At a time when the job market is very competitive, having the right experience as well as good qualifications is an important way of setting yourself apart from other candidates.



SCHOOL LEAVER PROGRAMMES

School leaver programmes are an option if you don't want to do more full time study and if you are a highly driven school or college leaver who knows exactly the career you want. They will allow you to get stuck in and start training and earning straight away.

What's more, the majority of companies that offer school leaver programmes pay their school leavers a very decent salary, on average ranging from £17,000-£20,000 at the beginning of the programme.

By the end of your school leaver programme, you will most likely have the same level of education as the graduate trainees who join the firm, but you will have an advantage over them in terms of experience and you will have professional qualifications related to your job role. For instance, accountancy firms like Price Waterhouse Cooper (PwC) help their school leavers to complete the ACCA (Association of Chartered Certified Accountants) qualification. This allows faster career progression and really enhances the earning potential of school leavers.



For more information
on these, visit



www.allaboutschoolleavers.co.uk



University is described by those who go as ‘the best period of their lives’, but it is also where a majority of post-16 leavers progress on to. At university you will get to study one subject over a period of at least three years. University is beneficial because:

- » It demonstrates a high level of study and some companies look for candidates to have degrees for certain jobs
- » You get to meet lots of new people
- » You get to live away from home, improving your independence
- » A graduates’ salary is on average 35% higher than a school/college leaver (Guardian, 2016)

If you want to apply to university, you have to submit an in-depth application via UCAS.com. You will have to write a personal statement and you can select up to 5 degrees to apply to – there are over 50,000 to choose from.

**DID YOU
KNOW?**

In Bath, you can study degrees at three different places; the two universities (University of Bath and Bath Spa University) and Bath College, who run degree-level study across a wide range of subject areas.



TAKING A GAP YEAR

Some people choose to defer starting university to take a gap year. Having a year between school/college and university could give you the opportunity to:

- » Develop as an individual
- » Volunteer and get some work experience
- » Work to fund future studies
- » Study additional qualifications
- » Gain experience in your chosen career
- » Travel, work or volunteer overseas

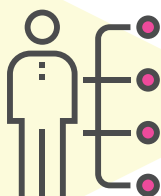
If you are planning international adventures a good place to start your research is www.yearoutgroup.org You may also find www.independentgapadvice.org useful.

Staying closer to home the Engineering Development Trust offer working gap years in industry www.etrust.org.uk/the-year-in-industry



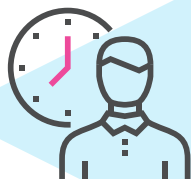
YOUR **▶▶▶** PATHWAY

Whether you're an apprentice, school leaver or graduate, when you wish to enter the world of work, there are a few basics you must be aware of to help you succeed.



EMPLOYABILITY SKILLS

A group of abilities that involve the development of a knowledge base and mindset that are increasingly necessary for success in the modern workplace. These are valued so highly by employers, that a nearly 90% of employers will look at a candidate's employability skills and attitude to work over their qualifications (CBI, 2016).



WORK EXPERIENCE

Getting work experience of any type (part-time, internship, volunteering etc.) will prove beneficial. It will allow you to talk about how this has developed your skills and demonstrates to employers you are 'work ready'. This is also valuable if and when putting together your UCAS personal statement.

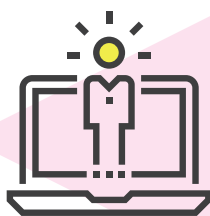


CV

A CV is the staple part of any job hunt or application process. Make sure it is specific to the job/company you are applying for. Be creative, it doesn't always have to be a printable two-page document.



PREPARING FOR THE WORLD OF WORK



SOCIAL MEDIA

Businesses engage with candidates in a variety of ways today. A lot of businesses use Twitter, and Facebook and other social media platforms. Have you got yourself a professional e-CV, for example a LinkedIn profile? It is worth thinking about your overall online profile e.g. what does your Facebook profile say to an employer about you?

ARE YOU ELIGIBLE TO WORK IN THE UK?

It is important to have identification that shows you are able to work in the uk. This could be a passport or a full birth/adoption certificate along with your national insurance number on an official letter. This is sent to you shortly before your 16th birthday, if you do not receive it you will have to contact hmrc.

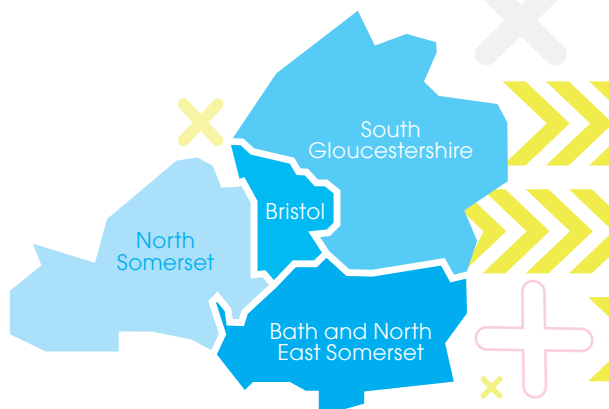
You will also need a bank account so that you can be paid. It is worth opening one before you turn 16 as the id requirements are less strict.



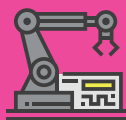
nationalcareers.service.gov.uk/get-a-job

YOUR PATHWAY

CURRENT BOOMING INDUSTRIES



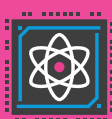
The region has identified the following as priority sectors, meaning they will try and attract businesses and create jobs within these areas:



**ADVANCED
ENGINEERING
& AEROSPACE**



**PROFESSIONAL
& FINANCIAL
SERVICES**



**HIGH
TECH**



**CREATIVE
& DIGITAL**



**LOW
CARBON**

By working with businesses and education providers the region aims to deliver:



**A well
motivated
workforce
with the skills
that business
needs**



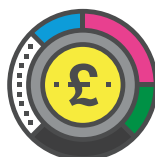
**Over £1
billion of
private sector
investment
over the next
3 years**



**95,000 new
jobs by 2030**



**Over 45,000
new 'green jobs'
required by 2030**



**The foundations
for a long-term
sustainable
economy**



WORKING IN THE WEST OF ENGLAND

WEST OF ENGLAND LABOUR MARKET INTELLIGENCE

Things to consider:

- » There are over 46,000 businesses in the West of England, employing around 630,000 people across a range of sectors
- » Bath and Bristol have been identified as two of the hot spots for Creative and Digital outside of London. There are over 42,000 jobs in this sector.
- » With pull factors like Cabot Circus in Bristol and Southgate in Bath, it is no surprise that 80,000 people work in Retail in the West of England
- » Recruitment figures for 2022:
 - Top occupations – programmer/software development, nurse, care worker
 - Entry level – construction, catering, retail
 - Graduate level – biological scientists, business and financial, electrical engineers
- » Key growth areas for jobs:
 - Health
 - Professional Services
 - Construction
 - Information Technology
- » Top skills requested by employers:
 - Communication
 - Management
 - Customer Service
 - Sales
 - Planning
- » The West of England has set an ambitious goal to be net zero carbon by 2030. To meet this, they have launched the Green Futures Fund to motivate and inspire students to enter 'green' jobs and careers.
- » Apprenticeships had dipped because of the pandemic, but since March 2021 there has been a spike in opportunities
- » Most Professional Services (Law, IT and Finance) salaries in the West of England are between £40,000-£49,999



	YEAR 9	YEAR 10	YEAR 11	
SEP	Think about GCSE options or talk to your school about alternatives to GCSEs.	Ask questions about your options so you know what grades you should aim for.	Open Days for college, schools and sixth forms. Check individual organisations for exact dates.	Find out more about apprenticeships and search for vacancies at www.gov.uk/apply-apprenticeship
OCT				
NOV				
DEC				
JAN	Pick your GCSE options. Your school will tell you the exact deadline	Careers guidance in school	Apply for College, school or sixth form.	
FEB				
MAR				
APR		Some schools do GCSE Exams	GCSE EXAMS	From 4th Friday in June you can start an apprenticeship.
MAY				
JUN				
JUL		The 4th Thursday in August is GCSE results day. You may need to talk to your college or sixth form about your grades.		
AUG				

KS3

GCSES

PLANNING YOUR FUTURE

	YEAR 12	YEAR 13		ALL
SEP	Find out what grades you need for your next steps.	At any time in the year you can apply for apprenticeships.	Go to university Open Days. Write your personal statement and apply for university via www.ucas.com Oxbridge applications close mid October.	Ask your teachers, parents, carers and friends questions about your options. Find out what grades you should aim for.
OCT				
NOV				
DEC				
JAN	University open days		In mid January most university course applications close.	National Apprenticeship Week in February
FEB			University offers come in. You might be required to go to interviews.	
MAR			National Careers Week in March	
APR	Careers guidance in schools	A LEVEL EXAMS		If you're in Year 11+, consider trying to get work experience at any time in the year.
MAY				
JUN		If you are taking other Level 3 qualifications check with your learning provider for important dates and deadlines.		
JUL				
AUG		The 3rd Thursday in August is A level Results Day. University clearing process is open until late September		

FURTHER EDUCATION

B&NES CONTACTS

FE COLLEGES

Bath College

- ☎ 01225 312 191
- 🌐 www.bathcollege.ac.uk
- ✉ info@bathcollege.ac.uk

LIST OF SCHOOLS WITH SIXTH FORMS

Bath Academy

- ☎ 01225 334 577
- 🌐 www.bathacademy.co.uk

King Edward's School

- ☎ 01225 464 313
- 🌐 www.kesbath.com

Beechen Cliff School

- ☎ 01225 480 466
- 🌐 www.beechencliff.org.uk

Kingswood School

- ☎ 01225 734 200
- 🌐 www.kingswood.bath.sch.uk

Chew Valley School

- ☎ 01275 332 272
- 🌐 www.chewvalleyschool.co.uk

Midsomer Norton Sixth Form

- ☎ 01761 402 280
- 🌐 www.msnsixth.com

Hayesfield Girls School and Mixed Sixth Form

- ☎ 01225 426151
- 🌐 www.hayesfield.com

Monkton Combe School

- ☎ 01225 721 100
- 🌐 www.monktoncombeschool.com

The New Sixth (St. Gregory's)

☎ 01225 838 232
📍 www.newsixthbath.org.uk

Oldfield School

☎ 01225 423 582
📍 www.oldfieldschool.com

Prior Park College

☎ 01225 835 353
📍 www.priorparkcollege.com

Ralph Allen School

☎ 01225 832 936
📍 www.ralphallenschool.com

The Royal High School Bath

☎ 01225 313 877
📍 www.royalhighbath.gdst.net

Wellsway school

☎ 01179 864751
📍 www.wellswayschool.com

Writhlington School

☎ 01761 433 581
📍 www.writhlington.org.uk



SPECIAL SCHOOLS

Fosse Way School

☎ 01761 412 198
📍 www.fossewayschool.co.uk

Three Ways School

☎ 01225 838 070
📍 www.threeways.co.uk

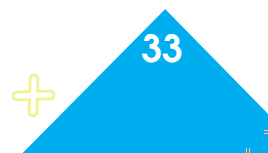
STUDIO SCHOOLS

IKB Academy

☎ 01179 161 025
📍 www.ikbacademy.org.uk

Somerset Studio School

☎ 01761 438 557
📍 www.somersetstudioschool.com





**YOUR
PATHWAY**

CAREER INFORMATION & INSPIRATION

National Careers Service

<https://nationalcareers.service.gov.uk>

For everyone over the age of 13.

Careerpilot

www.careerpilot.org.uk

Careers advice website including job sector analysis and in-depth information about options at both post-16 and post-18.

Start

www.startprofile.com

Free, online careers platform including career videos, quizzes and advice

National Apprenticeship Service

www.apprenticeships.gov.uk

For detailed information on apprenticeships.



Apprenticeship vacancies

<https://www.gov.uk/apply-apprenticeship>

Search engine for all apprenticeship vacancies across England.

South West Apprenticeship Company

www.theswac.org.uk

For a local flavour of apprenticeships, including vacancy searching.



B&NES Council

www.bathnes.gov.uk/services/skills-and-local-employment

Helpful links about employment and education in B&NES

UCAS

www.ucas.com

The starting point for all research about higher education and also where you apply.

Youth Connect South West

www.youthconnectsouthwest.org.uk

YCSW can provide support for those who need help getting in to training, education or employment.

Achieve in B&NES

Achieve in B&NES provides a job and course search service for anyone wishing to enter the workplace, or progress their career, within the Bath and North East Somerset area. They engage with a strong network of local businesses and support services who can confidently offer real jobs and opportunities into employment for both now and a productive future.

The Achieve in B&NES website gives details of the free and funded courses from local providers and each participant is at the heart of training provision in the local area. The Achieve in B&NES team also works hard with the larger developers in our area to ensure they meet their legal contributions to the education community.

Contact a member of the Achieve in B&NES team

by emailing: achieve@bathnes.gov.uk

For information go to: www.achieveinbathnes.co.uk



YOUR PATHWAY

- » What did you think?
- » Was this booklet helpful or unhelpful?
- » Could we make it better?

Let us know, email us at:
contact@ycsw.org.uk



**B&NES
LEARNING
& SKILLS
PARTNERSHIP**



**Bath & North East
Somerset Council**